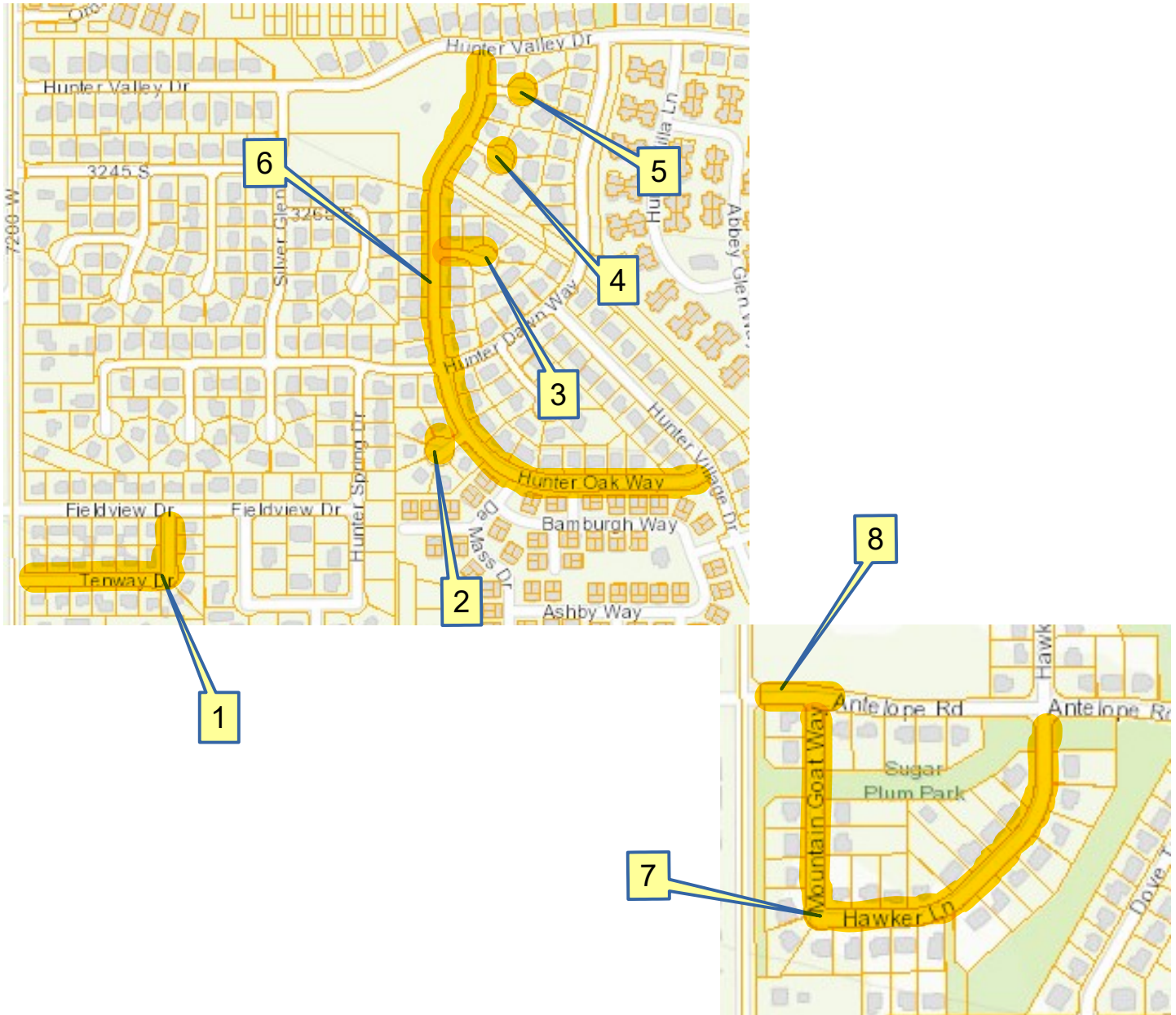


Asphalt Slurry Seal Schedule for June 29, 2020

One Day Street Closure

Application Sequence

www.wvc-ut.gov/slurry For daily schedule updates



1. TENWAY DR. - 7200 W TO 3415 S
2. HUNTER MAPLE CIR.
3. HUNTER PINE CIR.
4. HUNTER ASH CIR.
5. HUNTER BIRCH CIR.
6. HUNTER OAK WAY – 6900 W TO 3180 S
7. MOUNTAIN GOAT WAY – 2900 S TO 2905 S
8. ANTELOPE RD – 7200 W TO 7170 W



STREET MAINTENANCE NOTICE

DAY: TUESDAY WEDNESDAY THURSDAY
DATE: **June 29, 2020**

YOUR STREET IS SCHEDULED FOR SLURRY SEAL RESURFACING ON THE ABOVE INDICATED DATE. (See map on reverse side of this notice.)

NOTE: *Due to inclement weather or equipment failure, your street may be canceled for Slurry Seal Resurfacing on this day! If this should happen, you will be rescheduled to be completed at another time and will be given a notice of that date.*

On the day of the resurfacing*, we ask for your cooperation in the following requests:

1. **NO DRIVING OR PARKING** allowed on the street after **7:00 A.M.** until the barricades are removed in the evening by approximately **5:30 P.M.** If driven on, slurry seal will adhere to your tires. Please do not ride bikes, roller blade or walk on the slurry. It will stick to shoes, tires, etc. and is **very difficult to get off!**
2. Please remove all parked vehicles and debris from the street. Parked vehicles may be towed by police if the owner cannot be located to move it.
3. **Do not turn sprinklers on** the day of application. Water will damage slurry before it has completely cured.
4. **Do not park on the streets listed underneath the map on the reverse side of this notice.**
5. It takes approximately 3 – 4 weeks for the slurry to completely cure. Small rocks may be evident on your street during this time. We will schedule street sweepers on your street approximately one month after the day slurry is applied.

*The resurfacing is done utilizing a process known as Slurry Seal. This is a cost effective resurfacing method and is done primarily as a preventative maintenance measure to protect the street surface from deterioration. The slurry seals the pavement surface preventing infiltration of water and prevents the sun from hardening the surface. It also allows a new wearing surface and improves skid resistance, which allows cars to stop in a shorter distance.

We appreciate your cooperation and apologize for any inconvenience this process may cause. If you have any questions or need additional information, please call **801-963-3448**.

www.wvc-ut.gov/slurry For daily schedule updates