

# CPTED SAFETY TIPS

## CRIME PREVENTION THROUGH ENVIRONMENTAL DESIGN

Crime Prevention Through Environmental Design is a crime prevention philosophy based on the theory that proper design and effective use of the built (created) environment can lead to a reduction in the fear and incidence of crime, as well as an improvement in the quality of life. It is critical to understand that we live and function virtually entirely in a built environment. We are all affected by the built environment, whether we recognize it or not. The good thing is we have the ability, and hopefully the opportunity, to impact that effect through understanding and use of the principles of CPTED.

### NATURAL SURVEILLANCE



- Place lighting in such a way that it allows people to be recognized from 25 feet away. Avoid directing the lighting so that it glares into your eyes or into the eyes of persons passing by on the sidewalk or street. Glare may prevent you or passersby from seeing and identifying visitors to your door. Try to keep the light a white color to allow visitors to be better seen.
- Prune shrubs to no more than 36 inches high and trees up 7 feet from the ground. This allows you to maintain the shade provided by trees and the curb appeal of shrubbery, but it also provides a clear, unobstructed view. It also prevents criminals from easily hiding on your property.
- Leaving the window coverings open on at least a few front-facing windows creates the perception with people passing by that you are watching and will witness any crime that occurs there.
- Consider removing fences or walls that obstruct your view of the street. If you can't see out, then these areas may also provide a good place for a criminal to hide near your house, lay in wait for you, or conceal their efforts to break into your home.

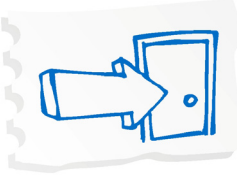
### MAINTENANCE



- Keeping your home painted, clean, and repaired sends the message that you are taking responsibility for your property and will call the police in the event of suspicious or criminal activity.
  - The storage of vehicles in your front yard for long periods of time creates several problems. It presents a target for potential car thieves or vehicle burglars. It creates places for trespassers or criminals to hide. It may also create the image that the vehicles are abandoned and uncared-for, and no responsible person is present to call police.
- Keeping outdoor lighting in good working condition allows for better natural surveillance and helps prevent criminal activity on your property.

***We look out for each other!***

## ACCESS CONTROL



- Make certain the path to your front door is clearly identifiable. It must leave no question about the proper way to approach your home. This allows potential criminals who don't approach properly to be more easily noticed.
- Make sure all exterior doors are solid-core and are secured by at least one deadbolt with a minimum 1 inch throw. Strike plates should also be secured with at least 3 inch screws. This helps to keep the door from being pried or kicked open. This is especially important with interior garage doors or other doors where the criminal is hidden from view.
- Keeping the door locks at least 40 inches from windows prevents criminals from breaking the window, reaching through the hole, and unlocking the door to get inside you home.
- All windows and sliding doors in your home should have locks to keep them from being pushed open from the outside.

## TERRITORIAL REINFORCEMENT



- Plant grass, flowers, or other shrubbery, or install short walls, fences, or other delineators to clearly show the line between your property and public property such as the roadway, sidewalk, or other easement. This demonstrates that you are responsible for your property, unwanted visitors are not welcome there, and you may call the police if a trespass occurs.
- A clearly defined street address allows police and fire services to find you easily in an emergency. It also sends a message to people on the street that you are taking responsibility for the property and have marked it as your own.
- Particularly in the front yard area, maintaining your landscaping to provide good access and visibility with your neighbors creates the image of a closeknit community. It suggests neighbors will protect each other if threatened by a criminal. This can be done by removing tall fences or bushes and replacing them with a low property line fence in the front yard, a strip of landscape edging, a planting of flowers, or even a path that connects the properties.
- Address numbers on your mailbox not only assist the mail carrier, they show that you are responsible for the box and the mail contained inside. Your mailbox should also be as close to your home as possible in order to reinforce it as being your property and your responsibility. However, do not move your mailbox from its current position without first consulting with the local postmaster.

**Emergency Dispatch**  
**Non-emergency Dispatch**

**911**  
**(801) 840-4000**



Police Dept.  
Community Services Section  
(801) 955-4100  
[www.wvc-ut.gov/cso](http://www.wvc-ut.gov/cso)

Community Preservation Dept.  
Code Enforcement Division  
(801) 963-3563  
[www.wvc-ut.gov/codeenforcement](http://www.wvc-ut.gov/codeenforcement)

Public Relations Division  
Neighborhood Services Office  
(801) 963-3285  
[www.wvc-ut.gov/neighborhoods](http://www.wvc-ut.gov/neighborhoods)